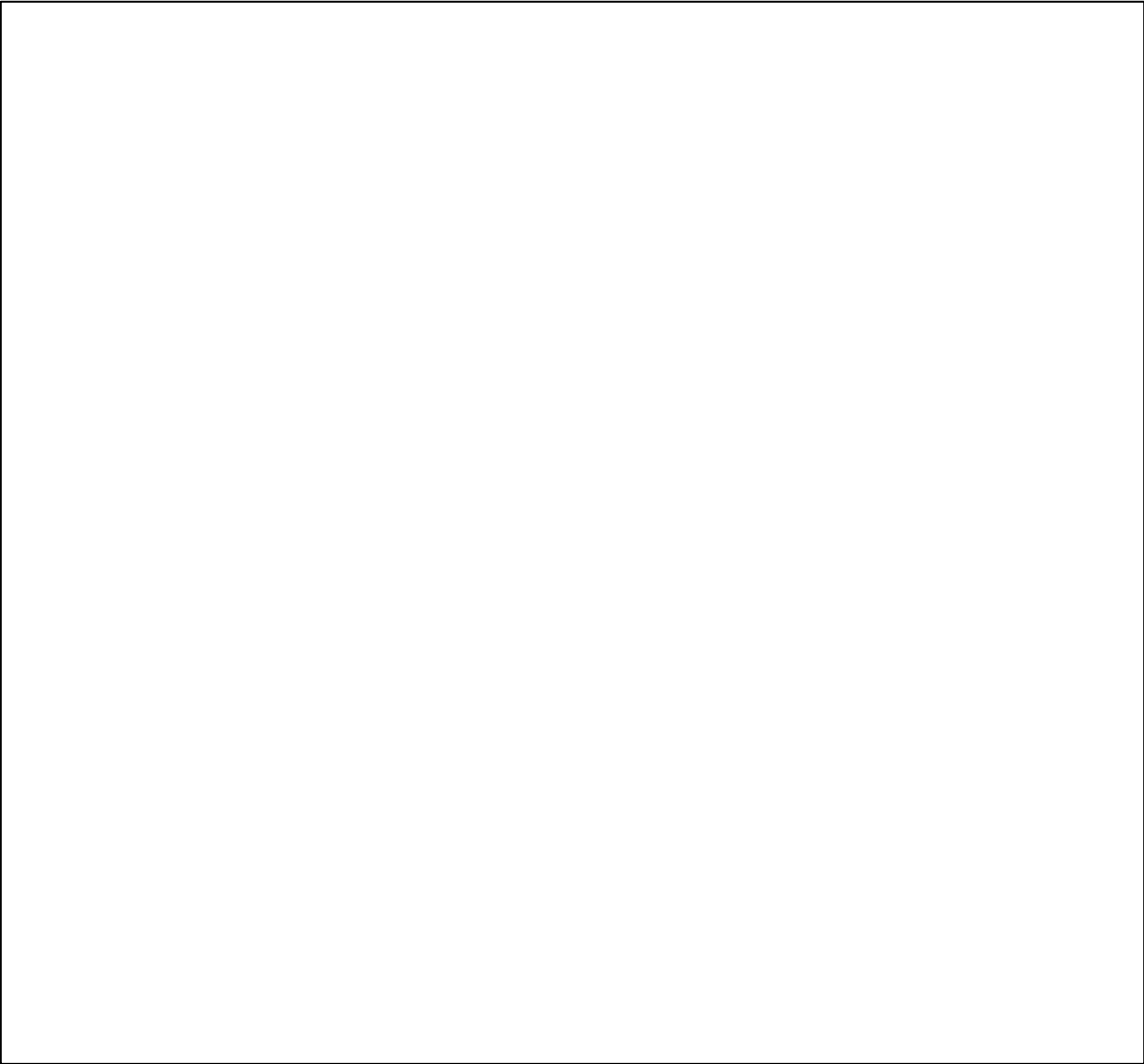
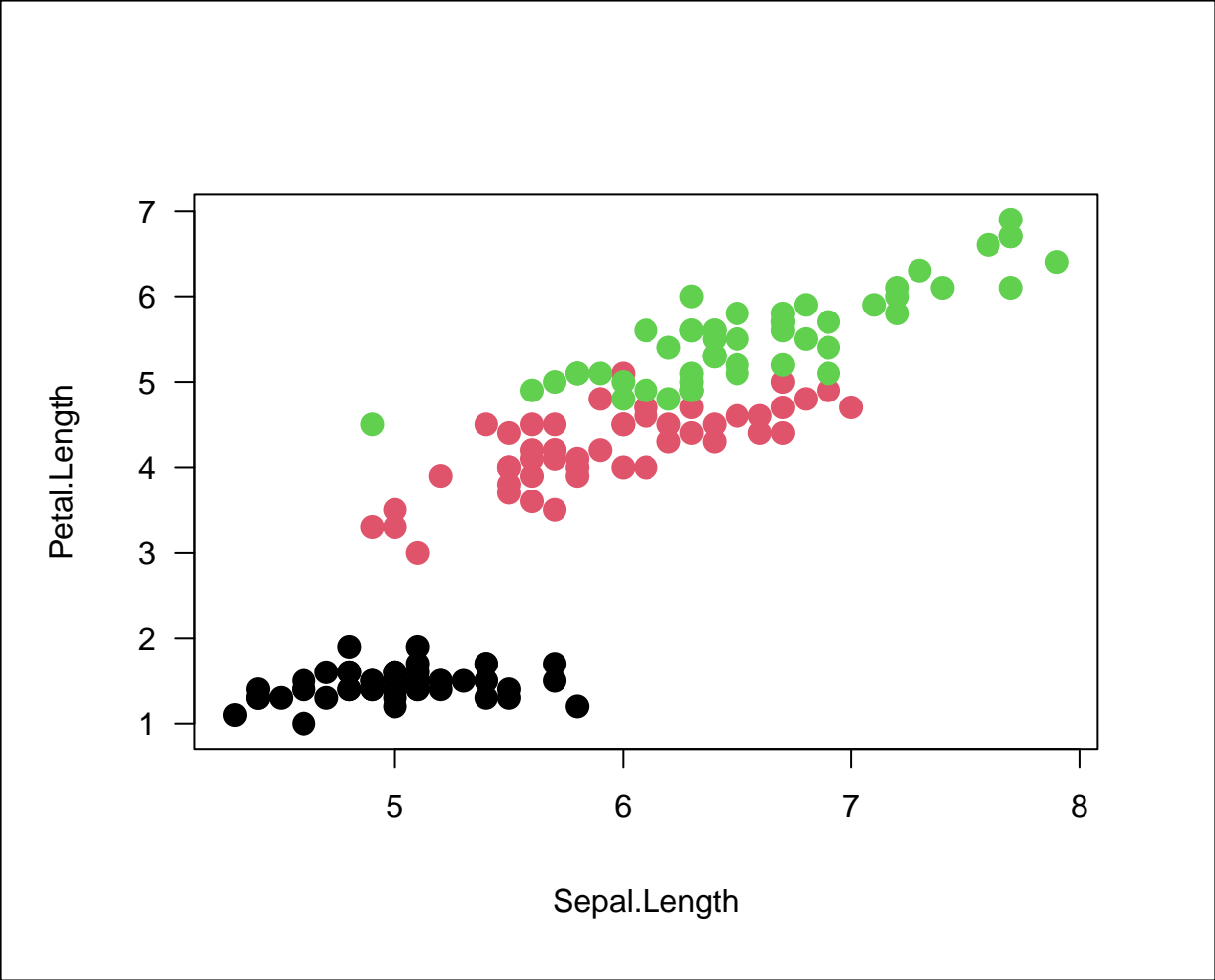


# Edgar Anderson's Iris Data



The species are *Iris setosa*, *versicolor*, and *virginica*.

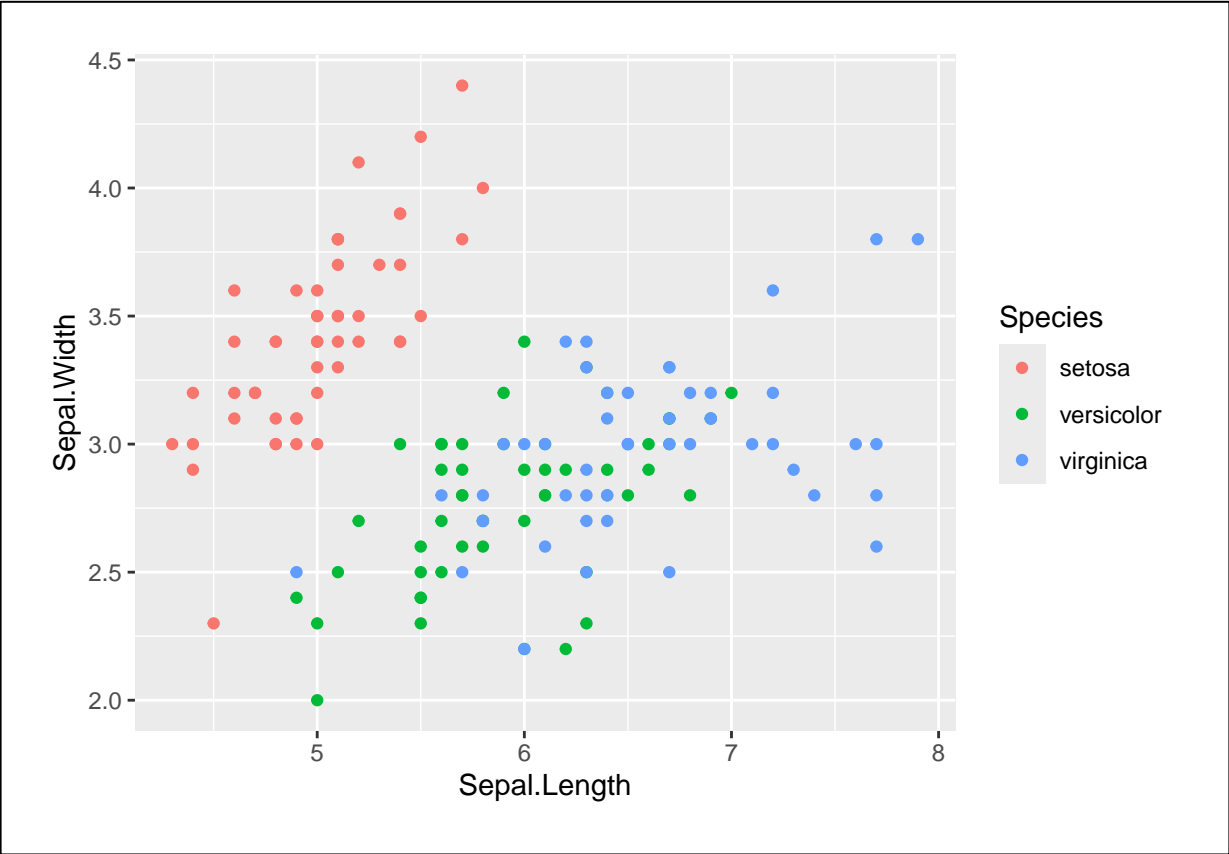
Edgar Anderson's Iris Data

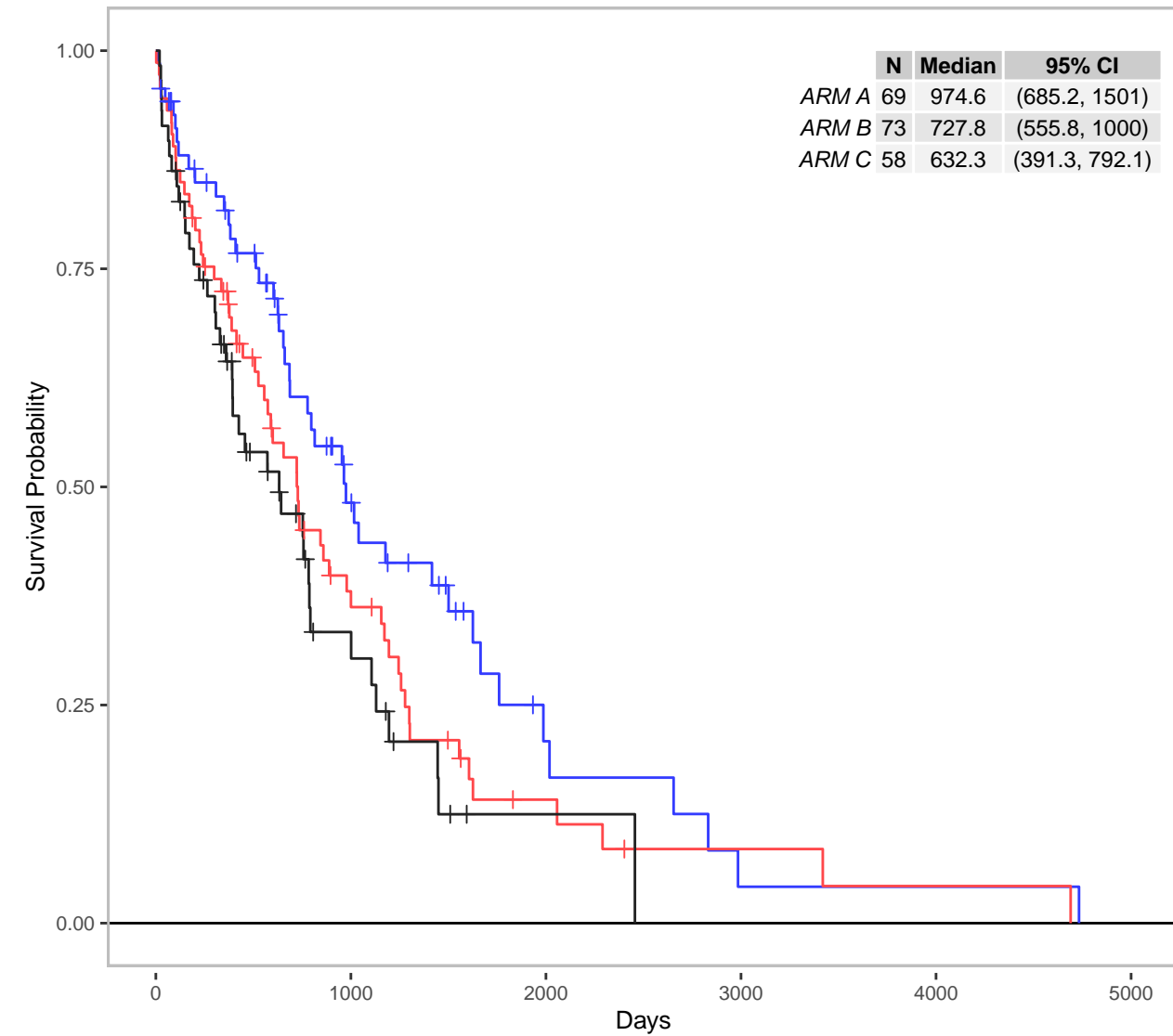


The species are Iris setosa, versicolor, and virginica.



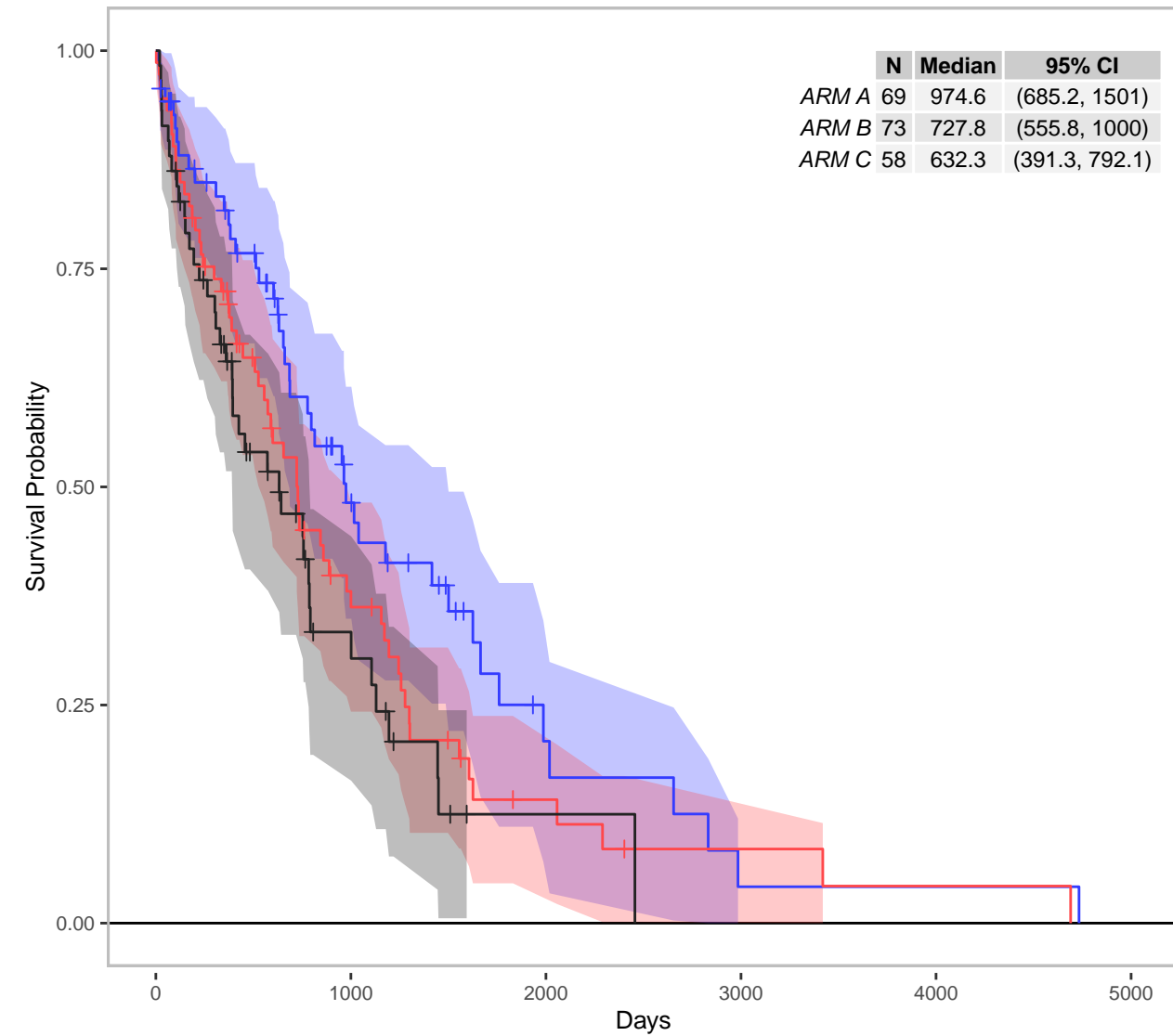
Hello  
One  
Two  
Three





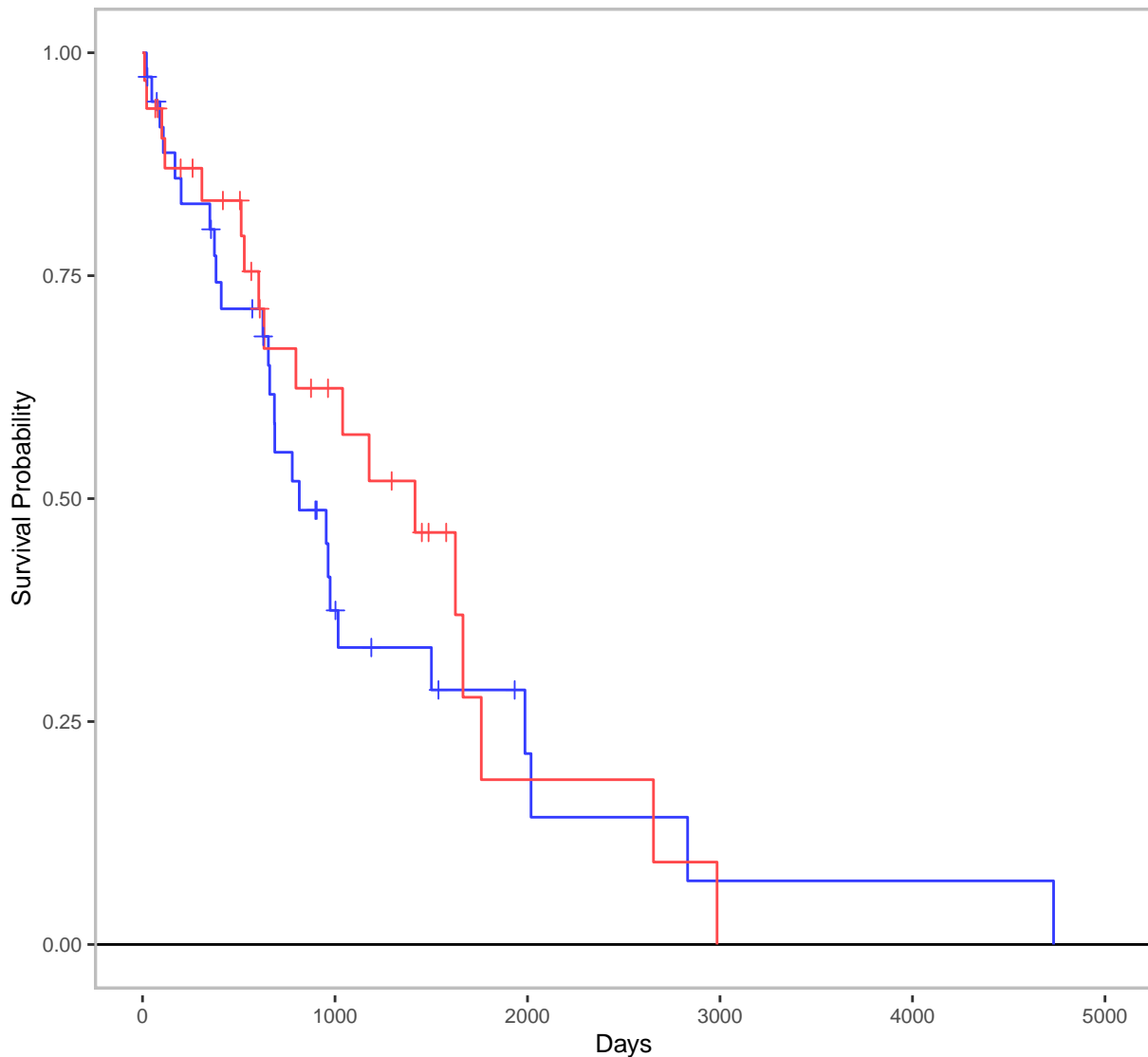
	69	22	5	1	1	0
ARM A	73	21	5	2	1	0
ARM B	58	11	1	0	0	0
ARM C	0	100	2000	3000	4000	5000

Days



	69	22	5	1	1	0
ARM A	73	21	5	2	1	0
ARM B	58	11	1	0	0	0
ARM C	0	0	0	0	0	0

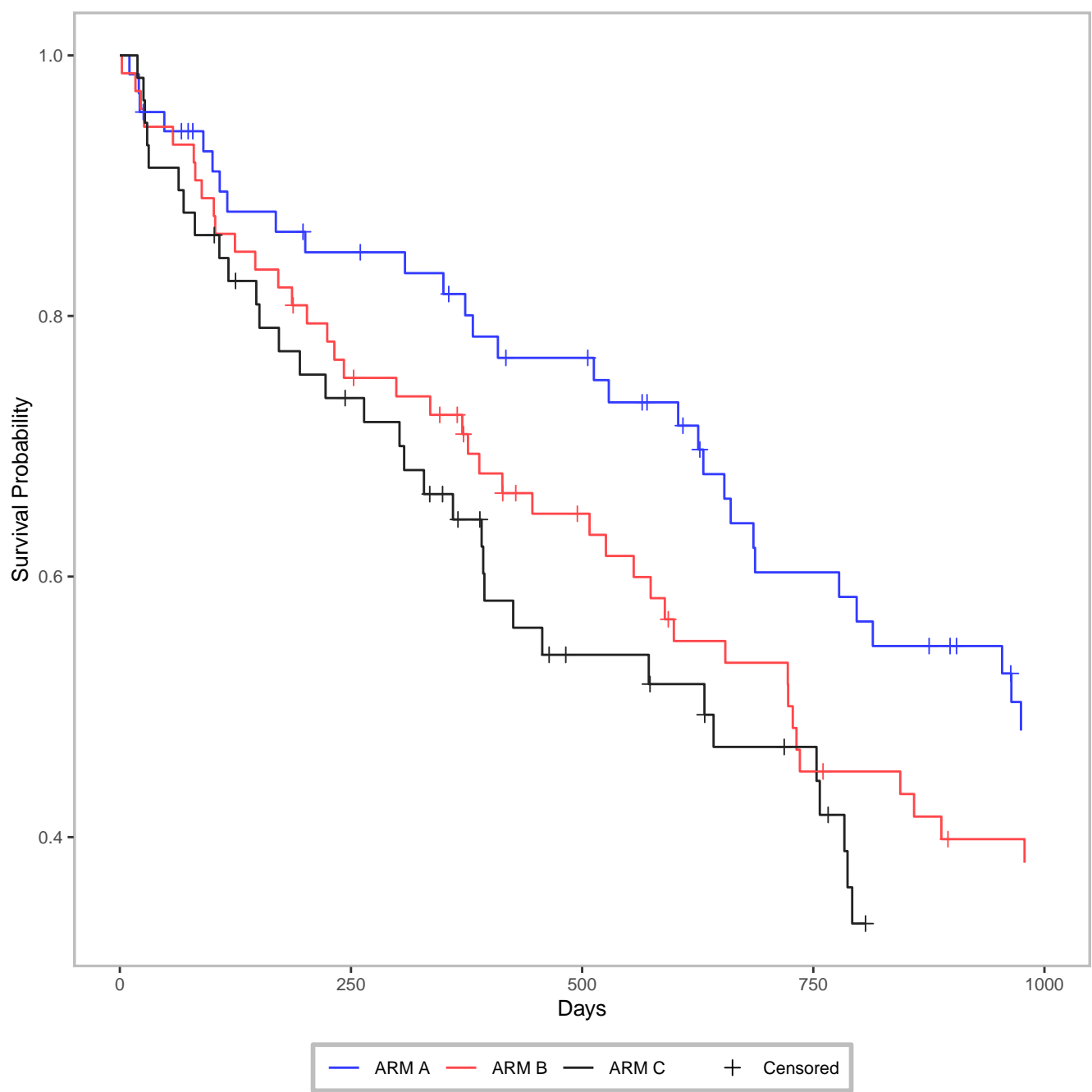
Days

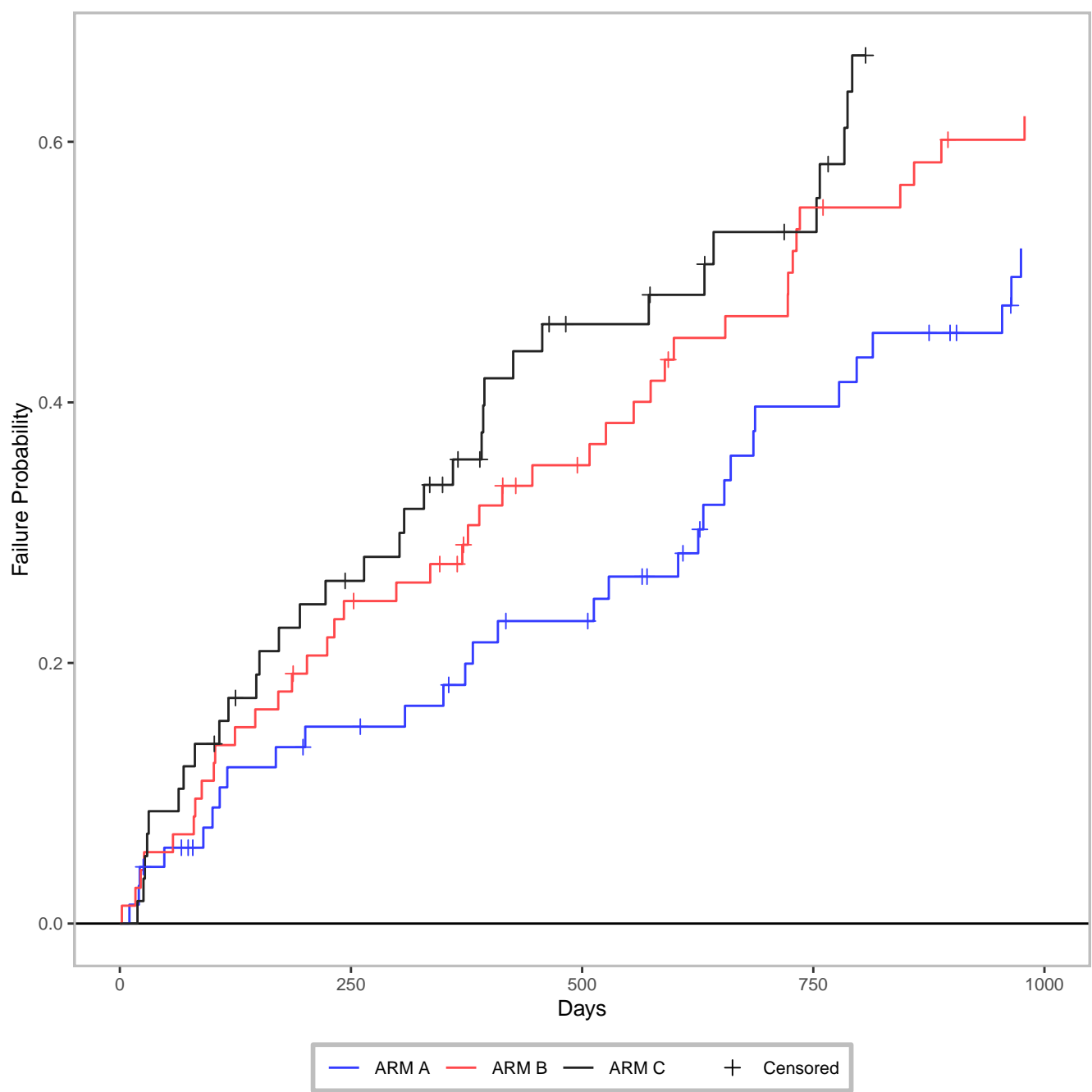


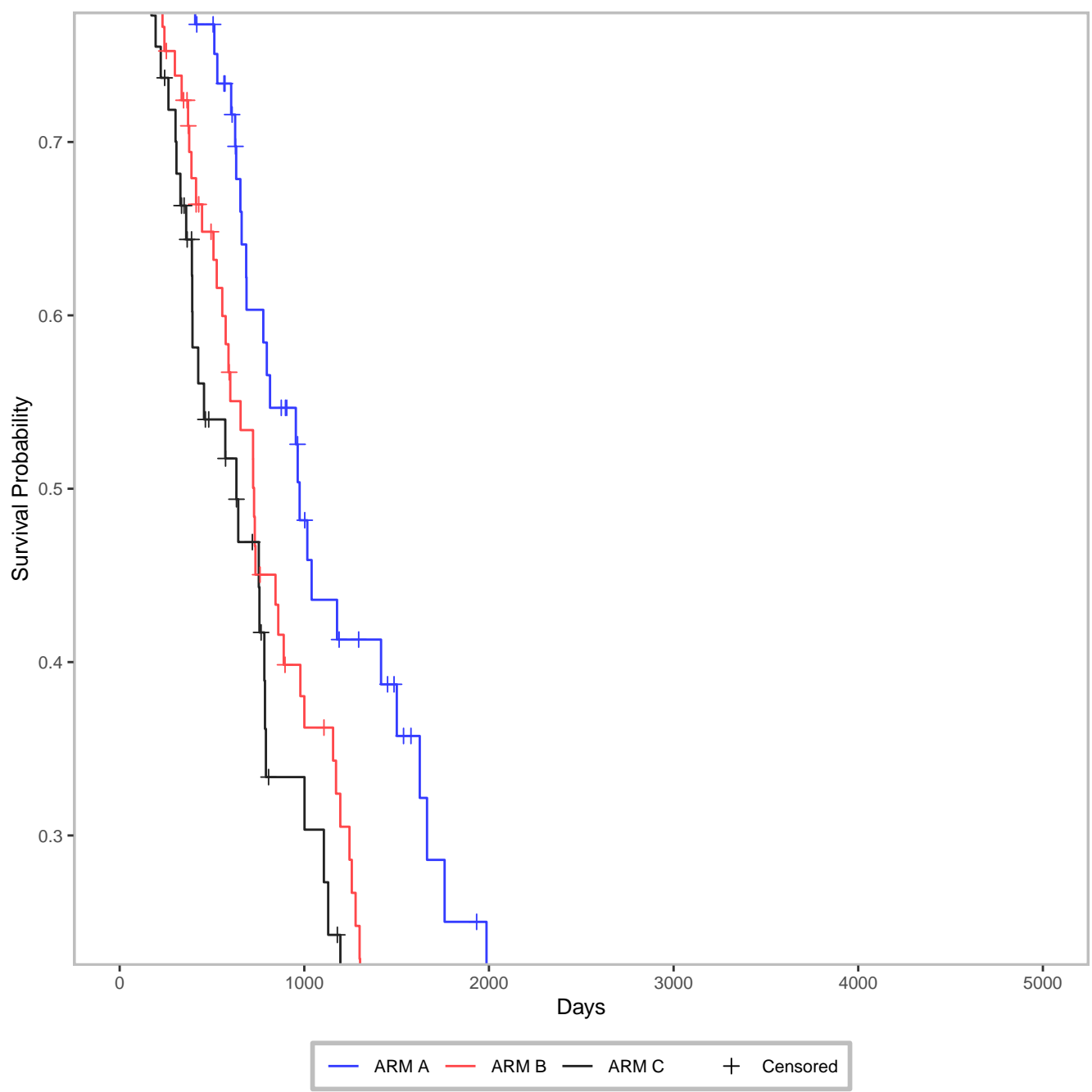
**Patients at Risk:**

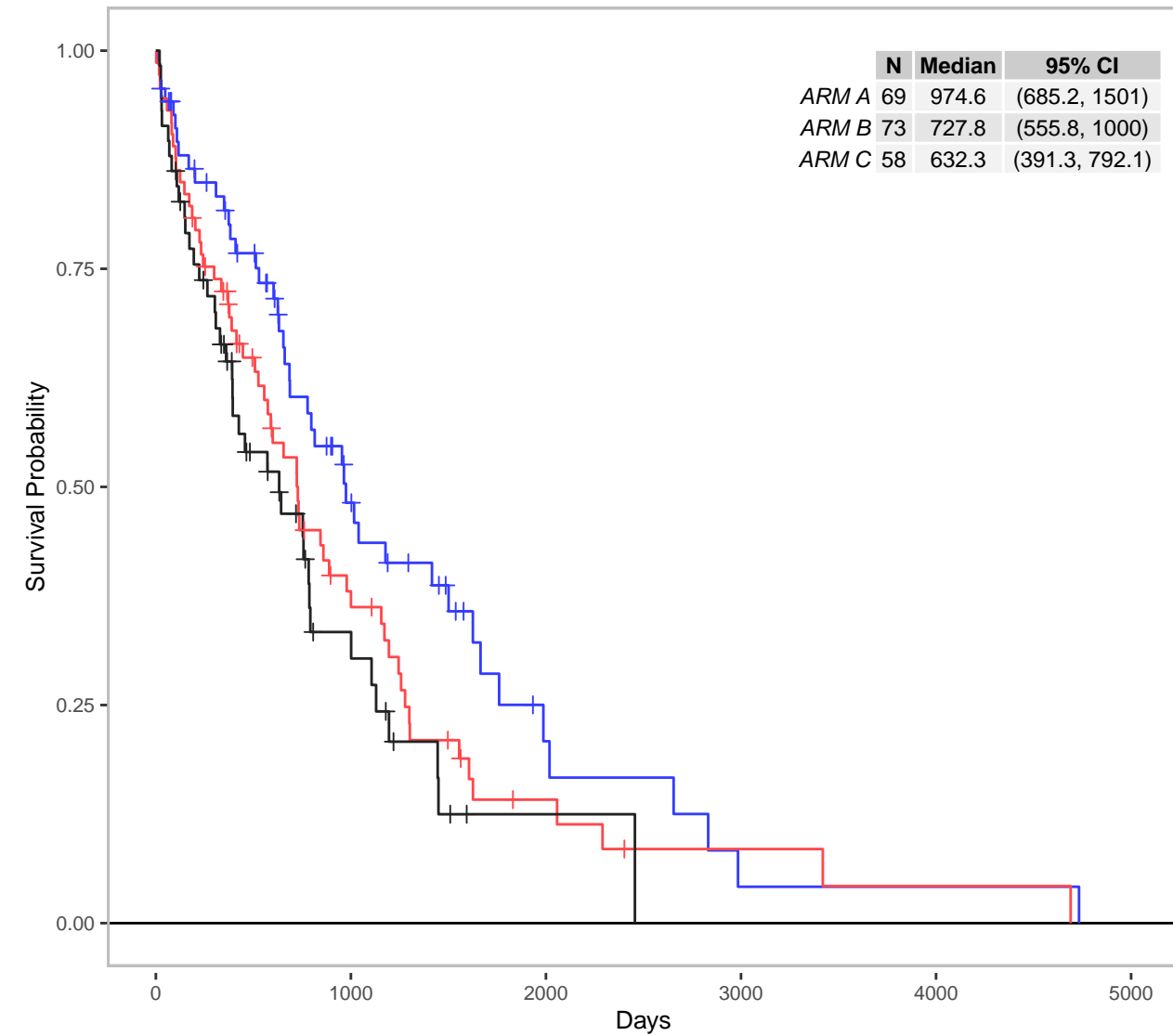
<=Median	37	10	3	1	1	0
>Median	32	12	2	0	0	0
	0	1000	2000	3000	4000	5000

Days



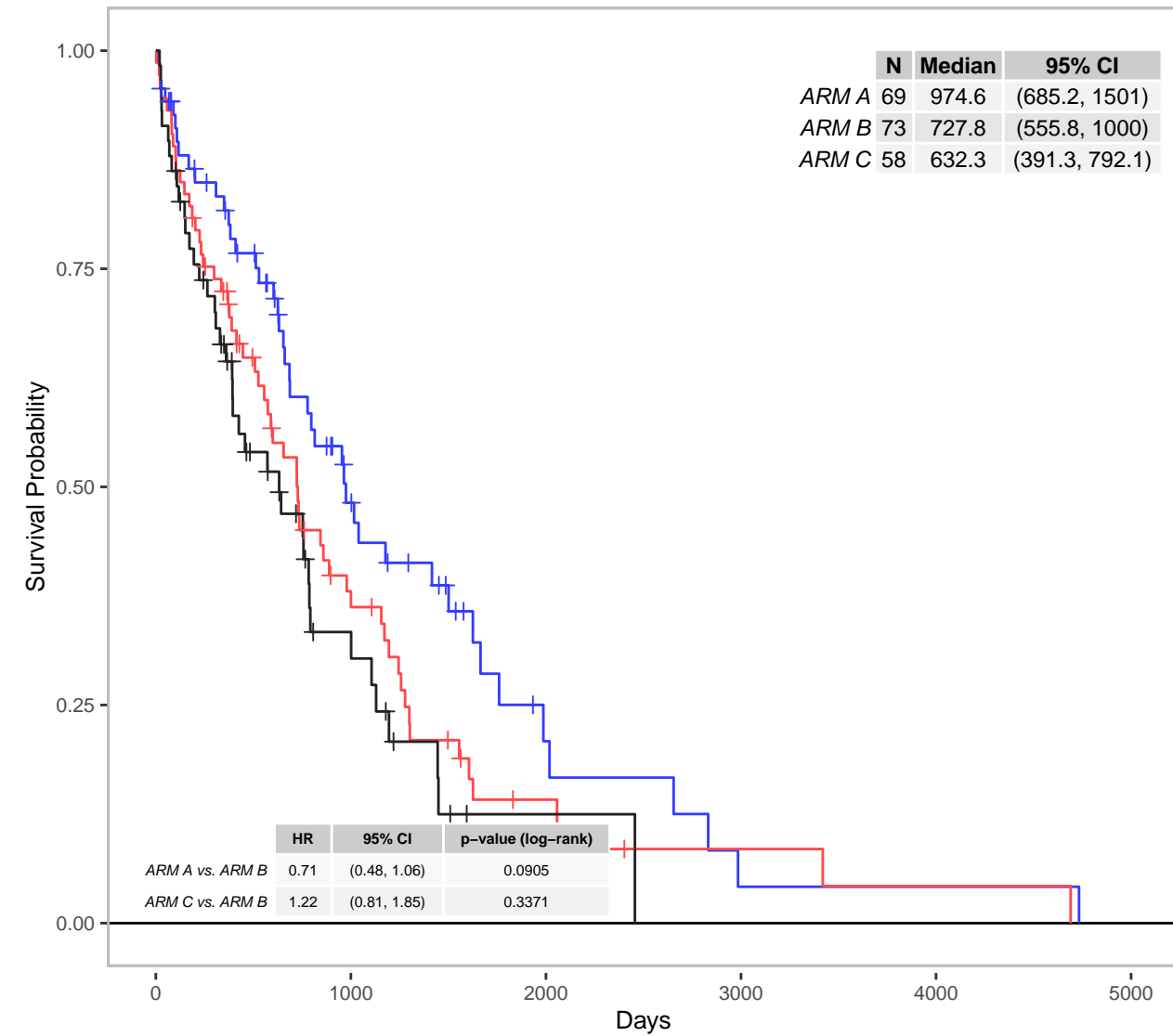






	69	22	5	1	1	0
ARM A	73	21	5	2	1	0
ARM B	58	11	1	0	0	0
ARM C	0	0	0	0	0	0

Days



	69	22	5	1	1	0
ARM A	73	21	5	2	1	0
ARM B	58	11	1	0	0	0
ARM C	0	0	0	0	0	0

Days