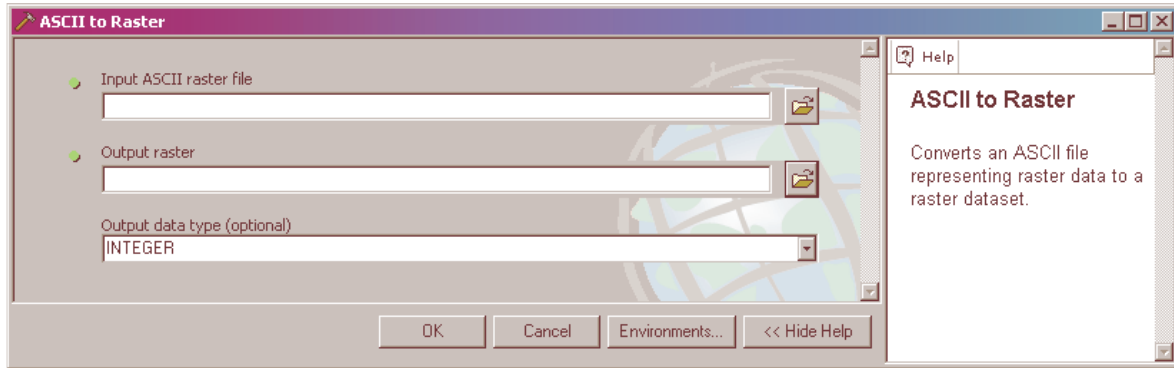


## Converting ModelMap output to ArcMap

In ArcCatalog, Open toolbox :

(1) Convert ASCII output file to an ArcInfo raster Grid.

From Arc Toolbox navigate to *Conversion Tools ... To Raster ...* and open *ASCII to Raster*.



Parameters:

Input ASCII raster file – Browse to output ASCII file.

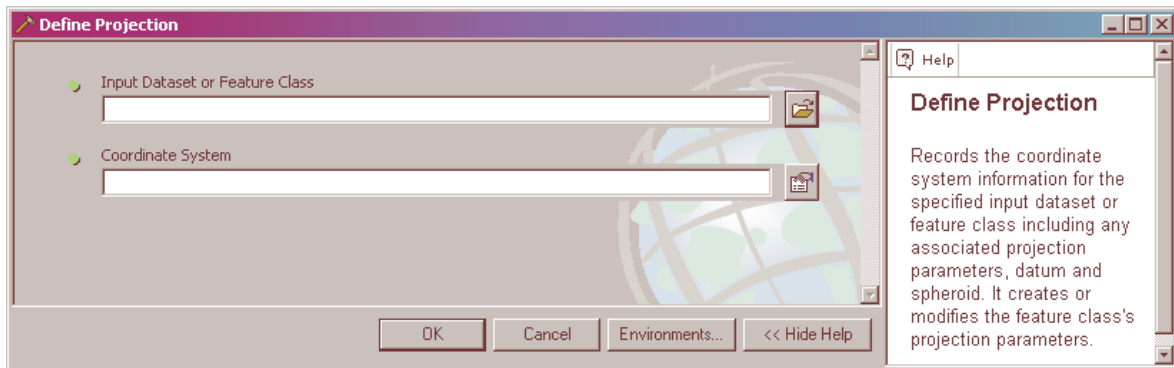
Output raster – Browse to directory for output raster and change name of default if desired.

Note: the name must be 13 characters or less.

Output data type (optional) – Integer or Float

(2) Define projection of ArcInfo raster Grid.

From Arc Toolbox navigate to *Projections and Transformations ... Raster ...* and open *Define Projection*.

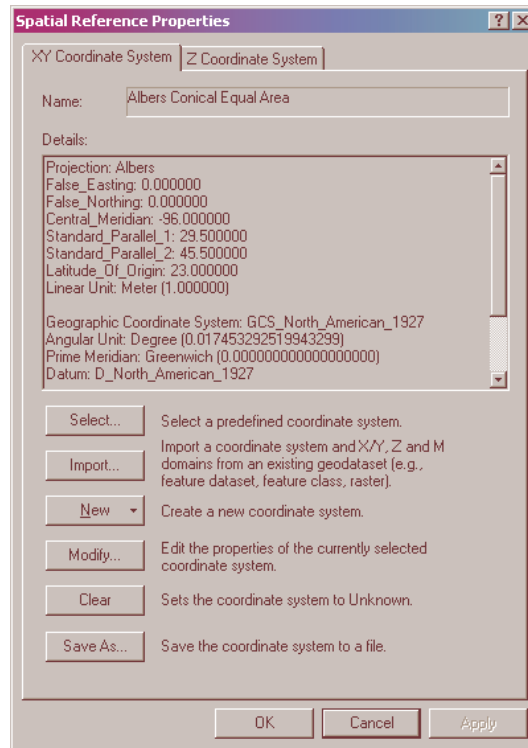


Parameters:

Input Dataset or Feature Class – Browse to output Grid raster.

Coordinate System – Click on icon and in pop-up window, click on Import...

Browse to an input predictor raster with projection information already defined.  
Click OK.



(3) Open ArcMap and Add Layer.